

Sabrent TV-USBHD HYBRID USB HDTV TV TUNER WITH FM RADIO & REMOTE CONTROL

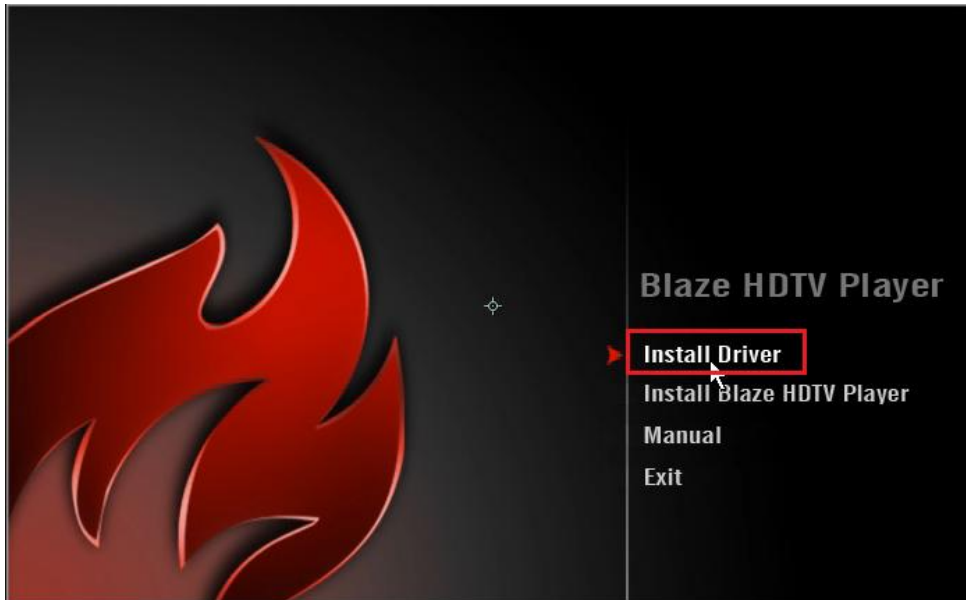
(ATSC DIGITAL/CLEAR QAM/NTSC ANALOG)

Driver Installation:

1. Connect your TV-USBHD dongle into an open USB 2.0 port on your computer.
2. Insert the software disc into your computer's disc drive. When prompted, click on **Run AUTORUN.EXE**:



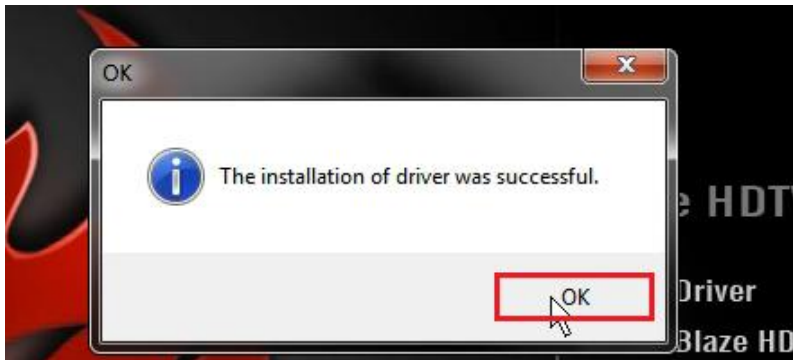
3. Click on **Install Driver**:



4. When prompted click on **Install Driver**:



5. Click **OK**:



6. Click on the **Start Button**. Type **Device Manager** into the search box, and click on **Device Manager**:

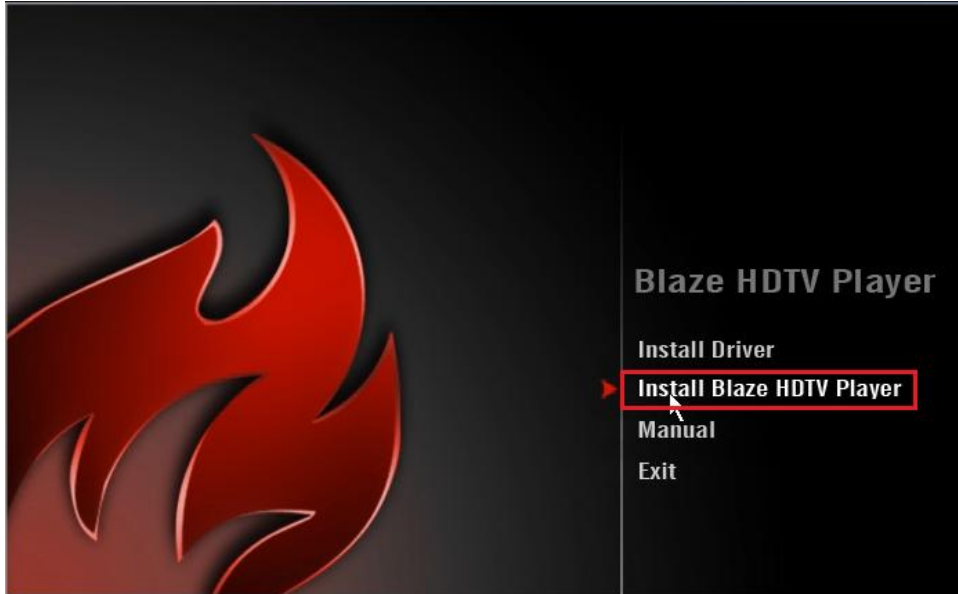


7. **Click** on the arrow to the left of the section labeled **Sound, video and game controllers**. Verify that the three entries below appear, as shown below:



BlazeVideo HDTV Player Installation:

1. Click on **Install Blaze HDTV Player**:



2. Select your language, and click **OK**:



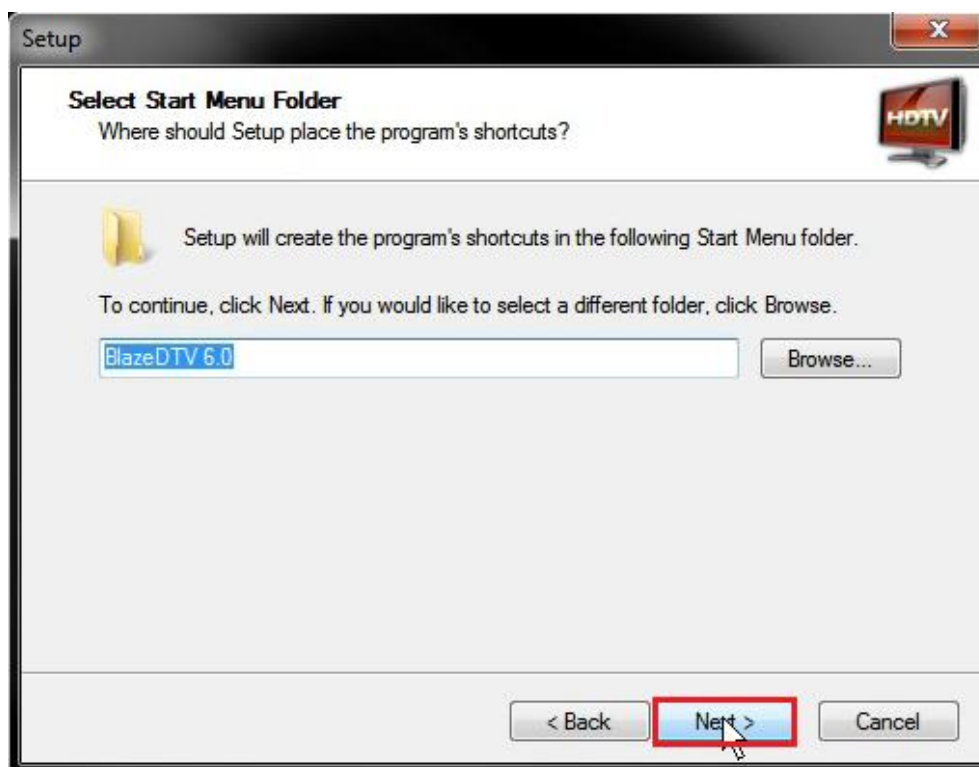
3. Click **Next**:



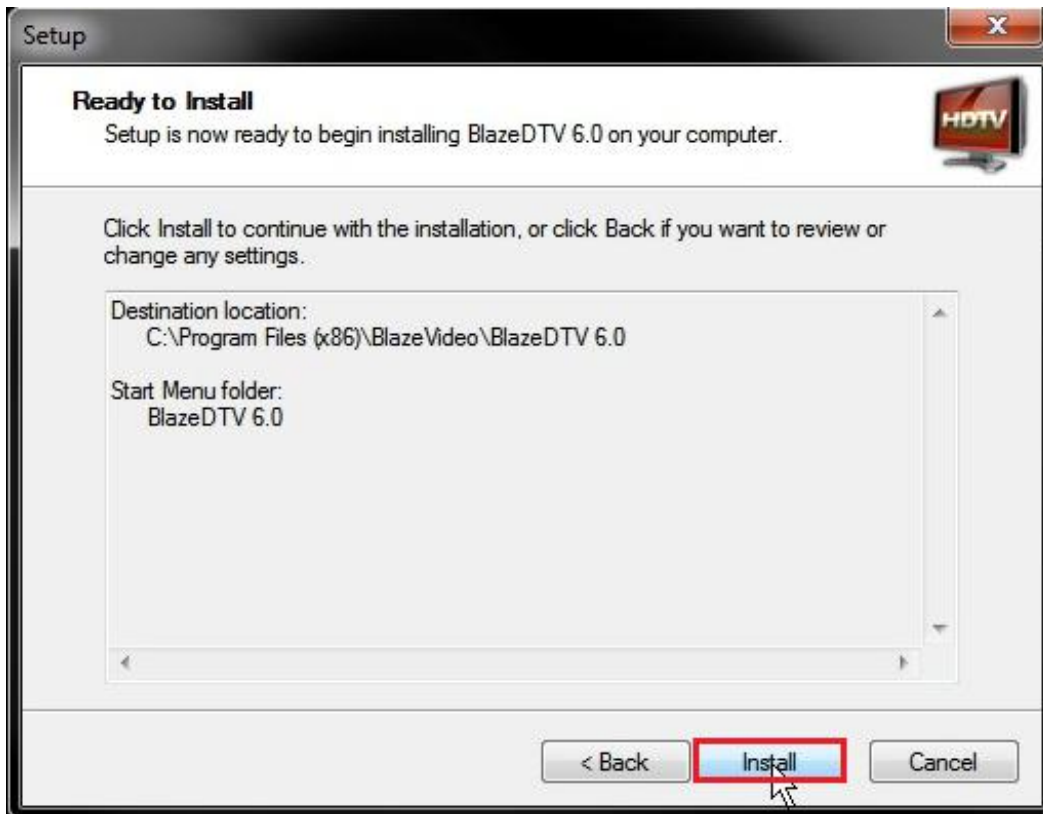
4. Click on **I accept the agreement** and click **Next**:



5. Click on **Next**:



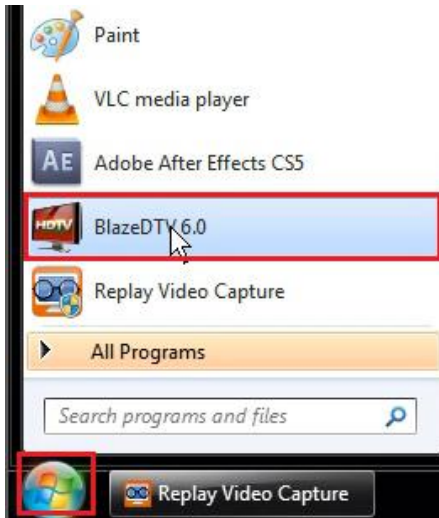
6. Click on **Install**:



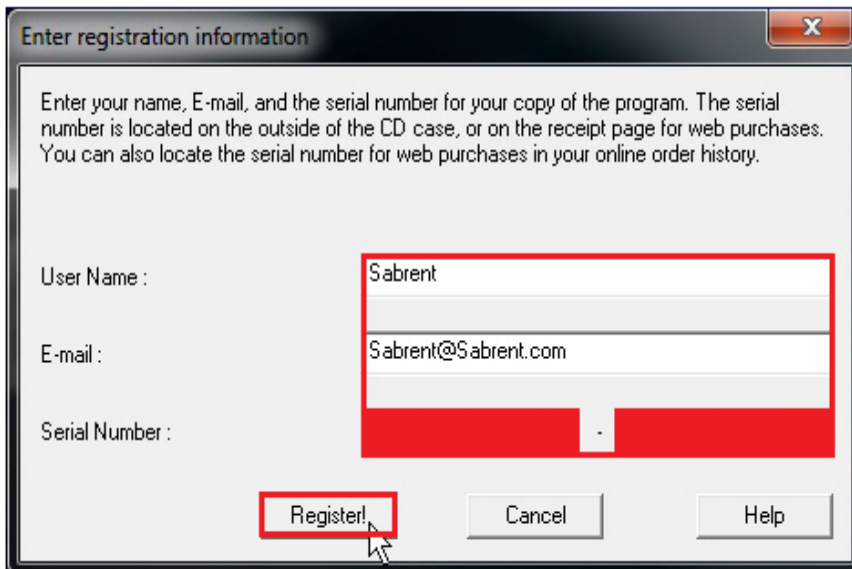
7. Click on **Finish**:



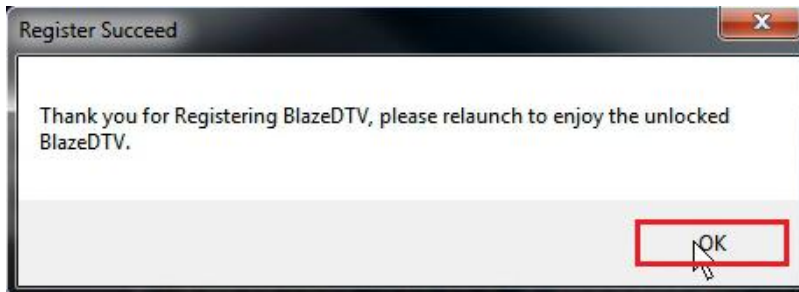
8. Click on the **Start Button** and open **BlazeDTV 6.0**:



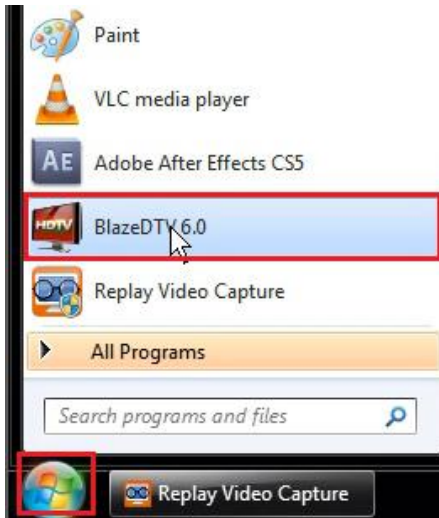
9. Fill in the three sections shown below. Click **Register**:



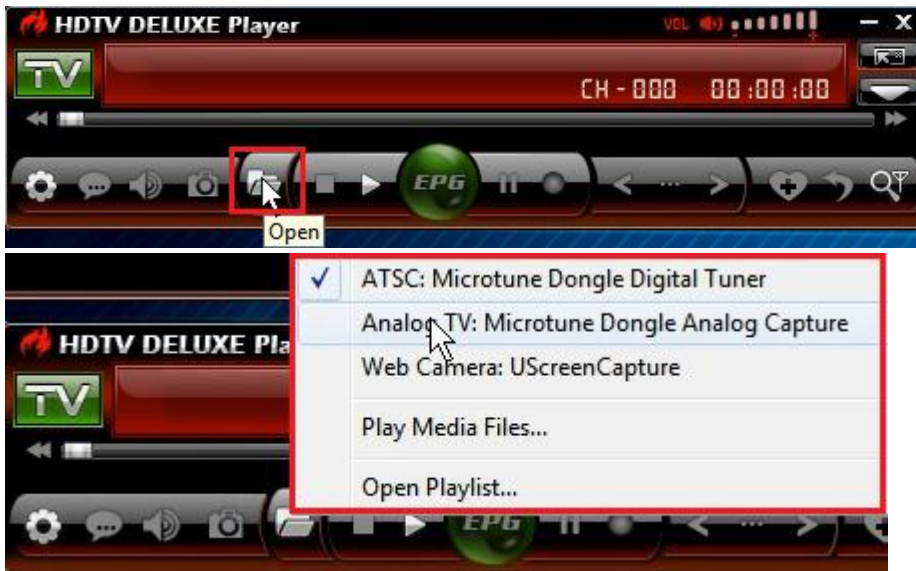
10. When prompted, click **OK**:



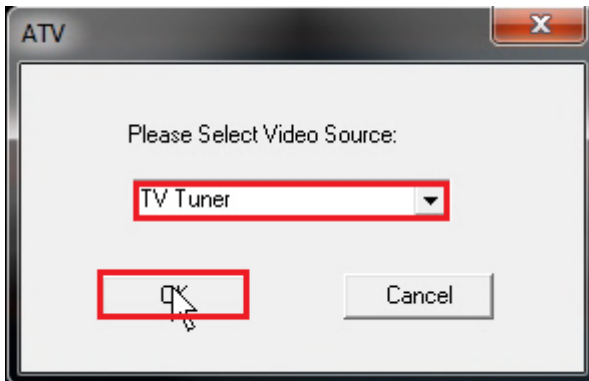
11. Click on the **Start Button** and open **BlazeDTV 6.0**:



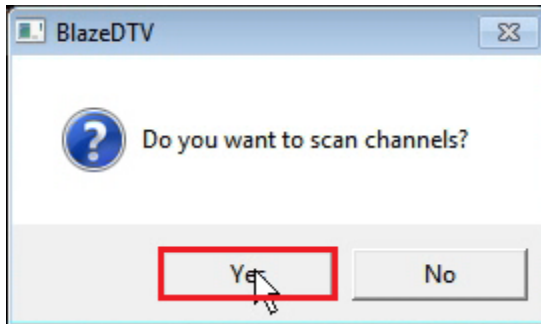
12. Click on the **Open** icon. Select your input source. Please note: **ATSC** should be selected for ATSC Digital TV and **Analog** should be selected primarily for Cable TV.



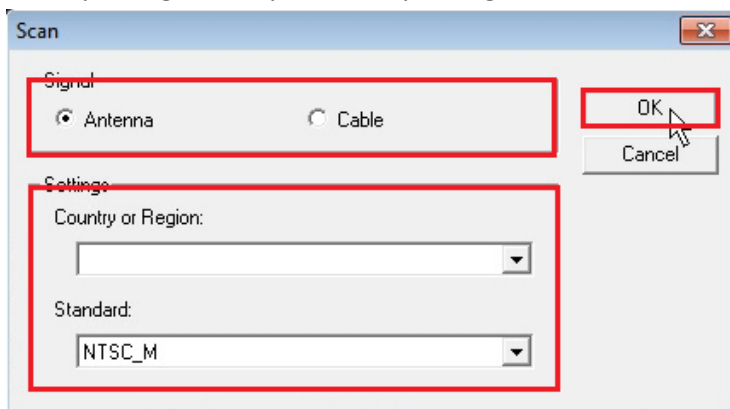
13. Select your Video Source, and click **OK**:



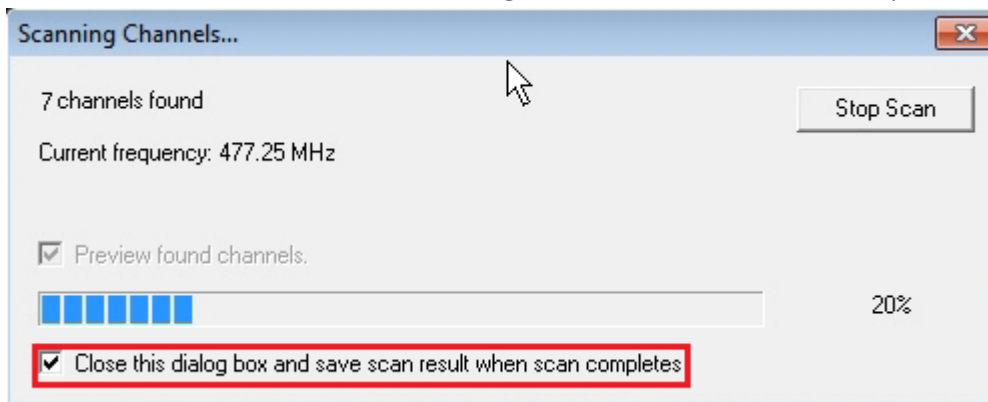
14. Click **OK**:



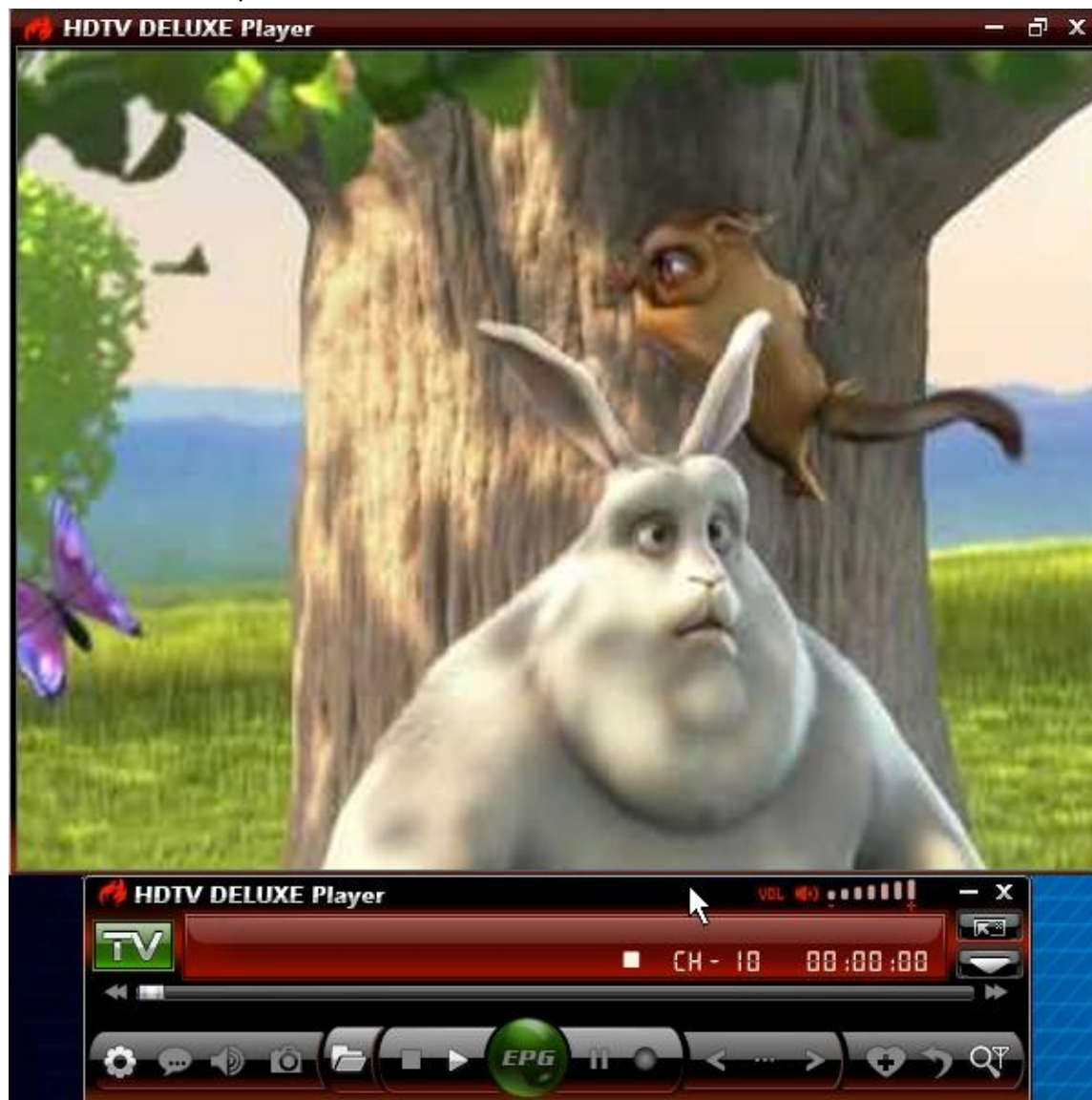
15. Select your signal and your County or Region, and click **OK**:



16. Click the checkbox next to **Close this dialog box...** Wait for the scan to complete:

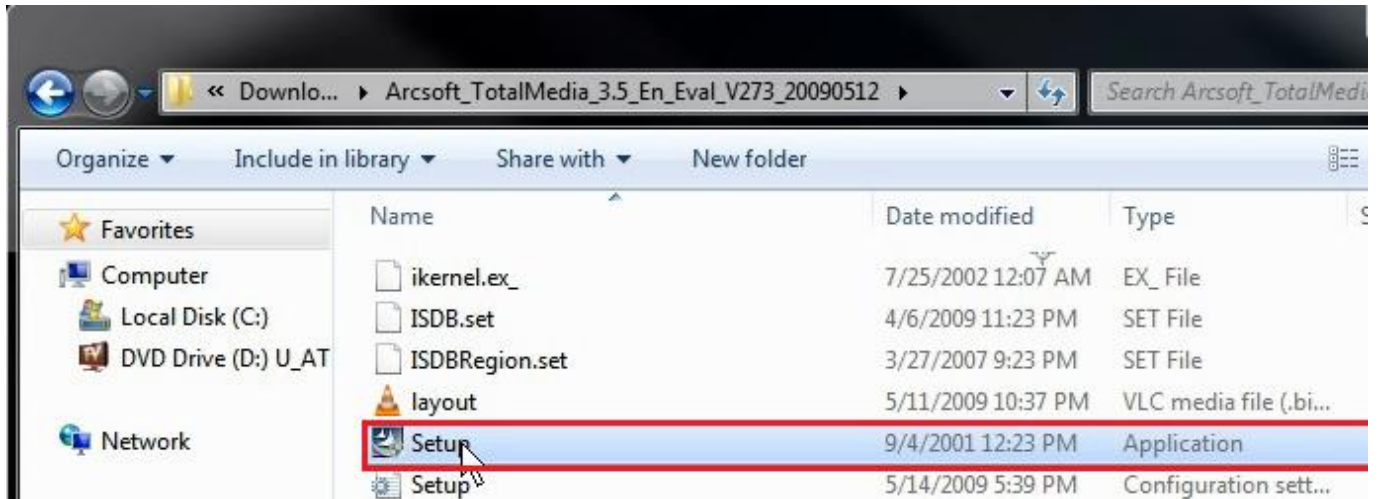


17. You can now watch your TV.

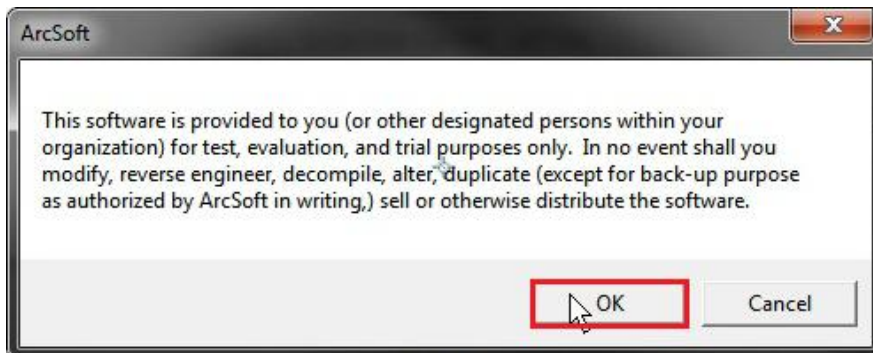


ArcSoft TotalMedia 3.5 Installation:

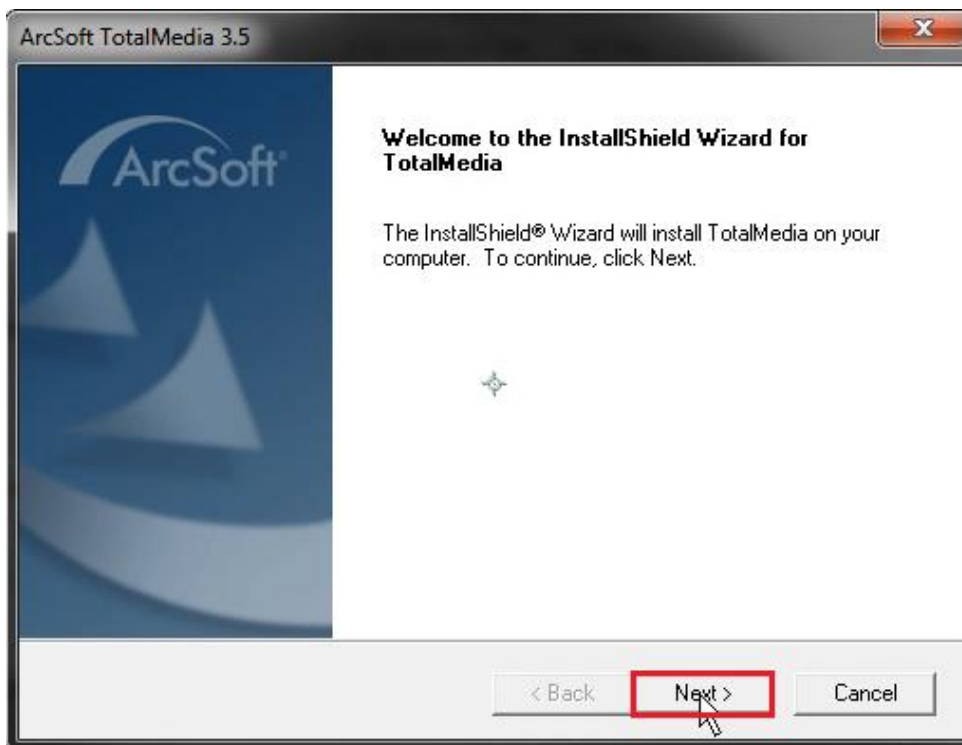
1. Insert the **software disc** into your computer's disk drive. **Explore** the disc contents and run **Setup.exe**:



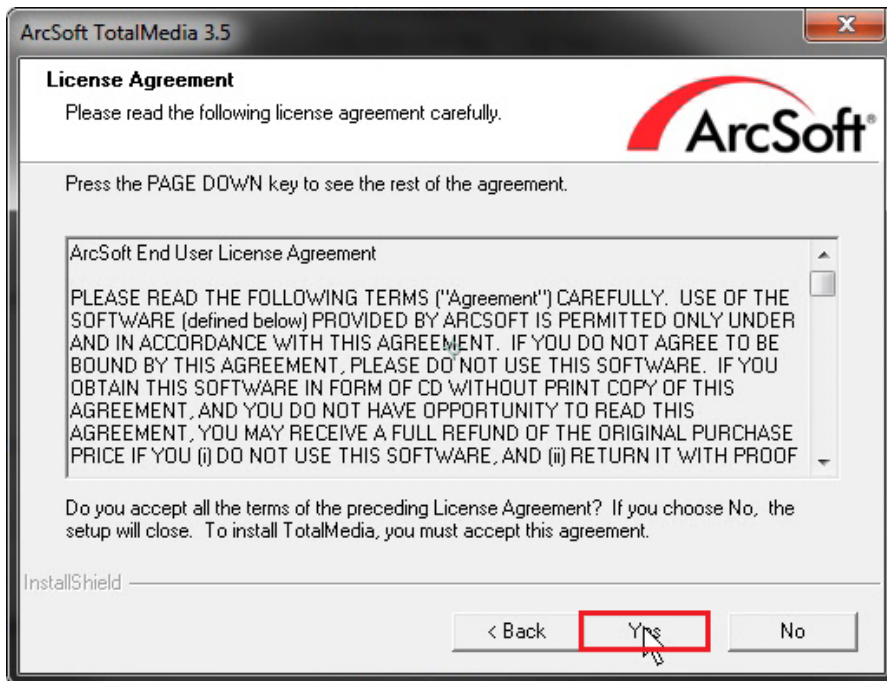
2. When prompted, click **OK**:



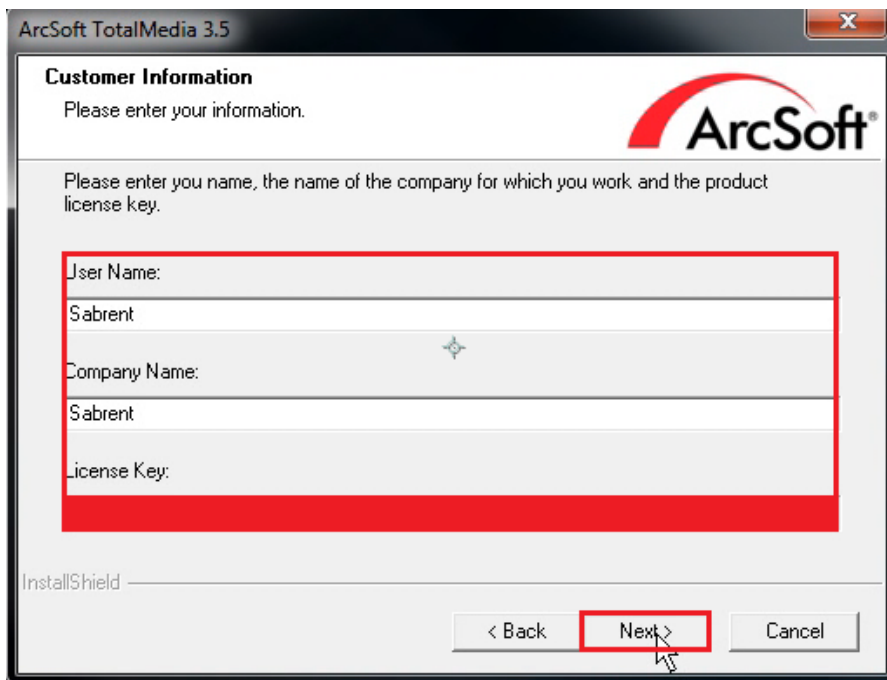
3. Click **Next**:



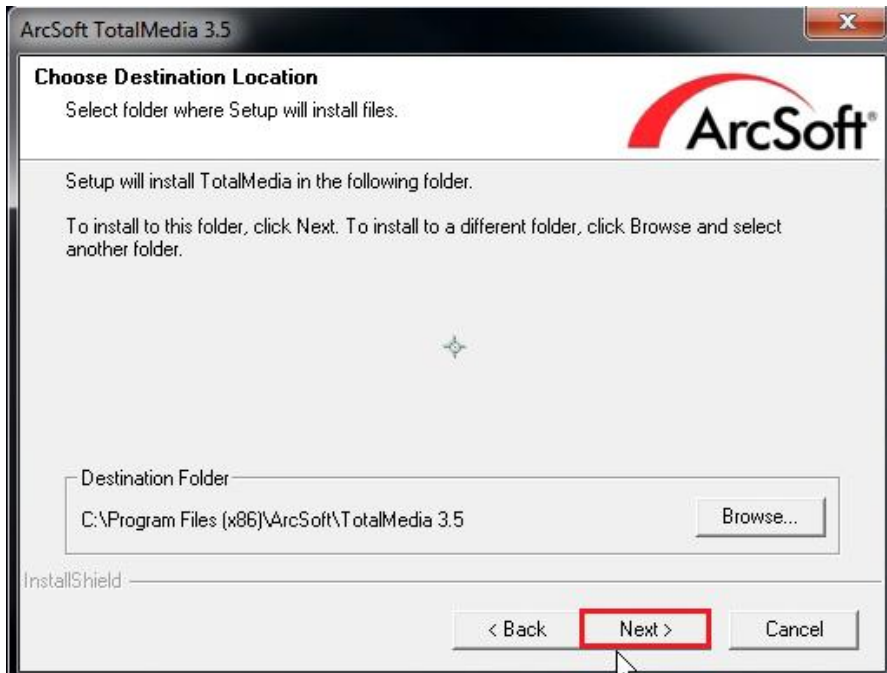
4. Click **Yes**:



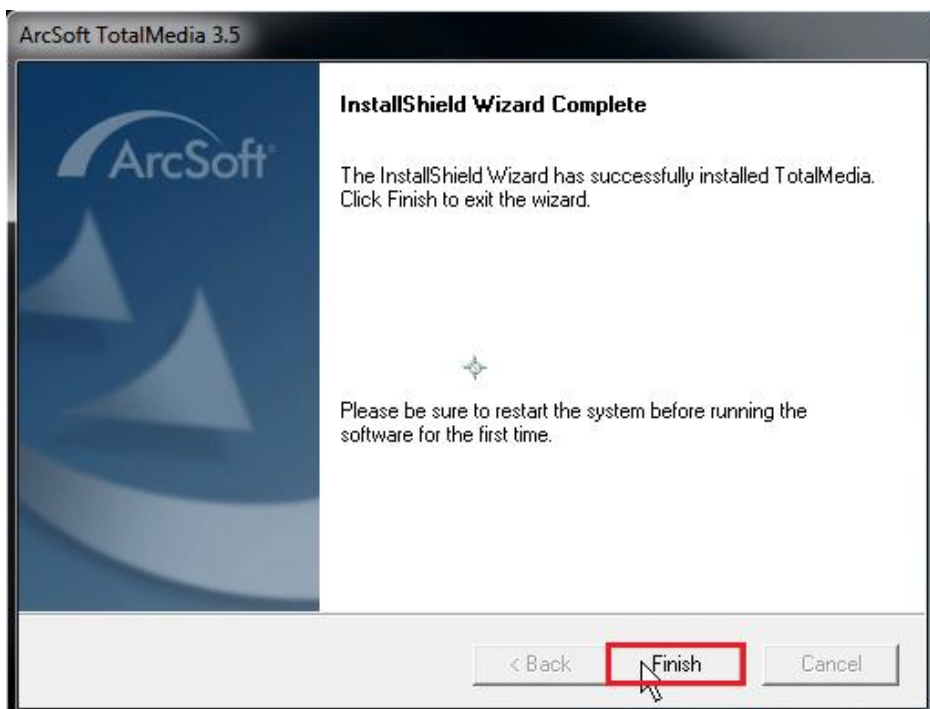
5. Fill in the three sections shown below. Click **Next**:



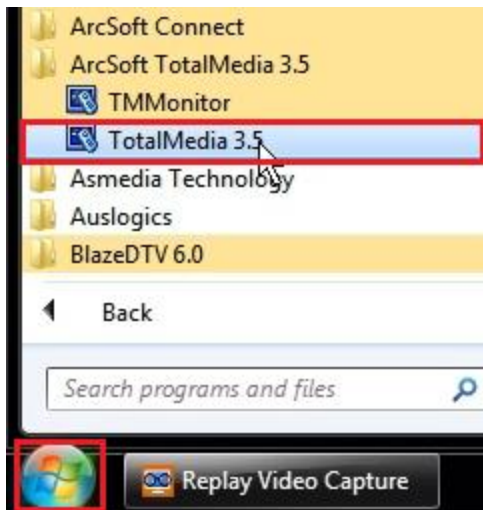
6. Click **Next**:



7. Click **Finish**:



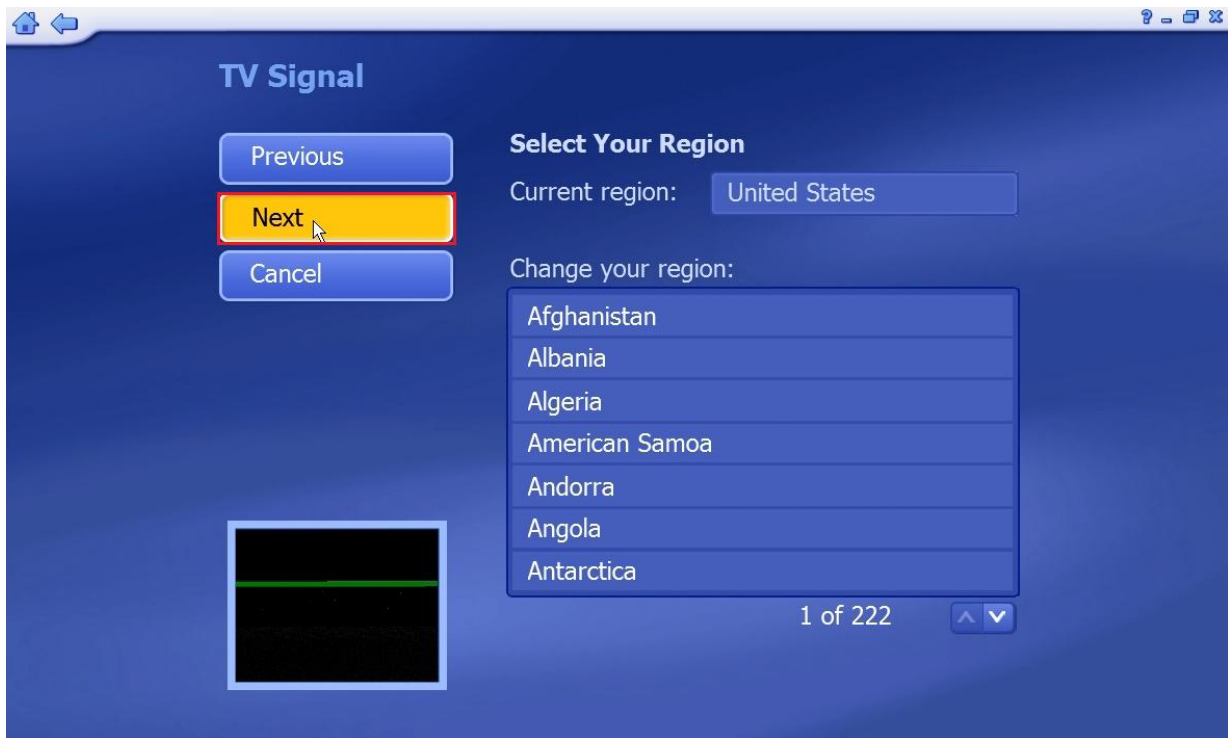
8. Click the **Start Button**. Open **TotalMedia 3.5**:



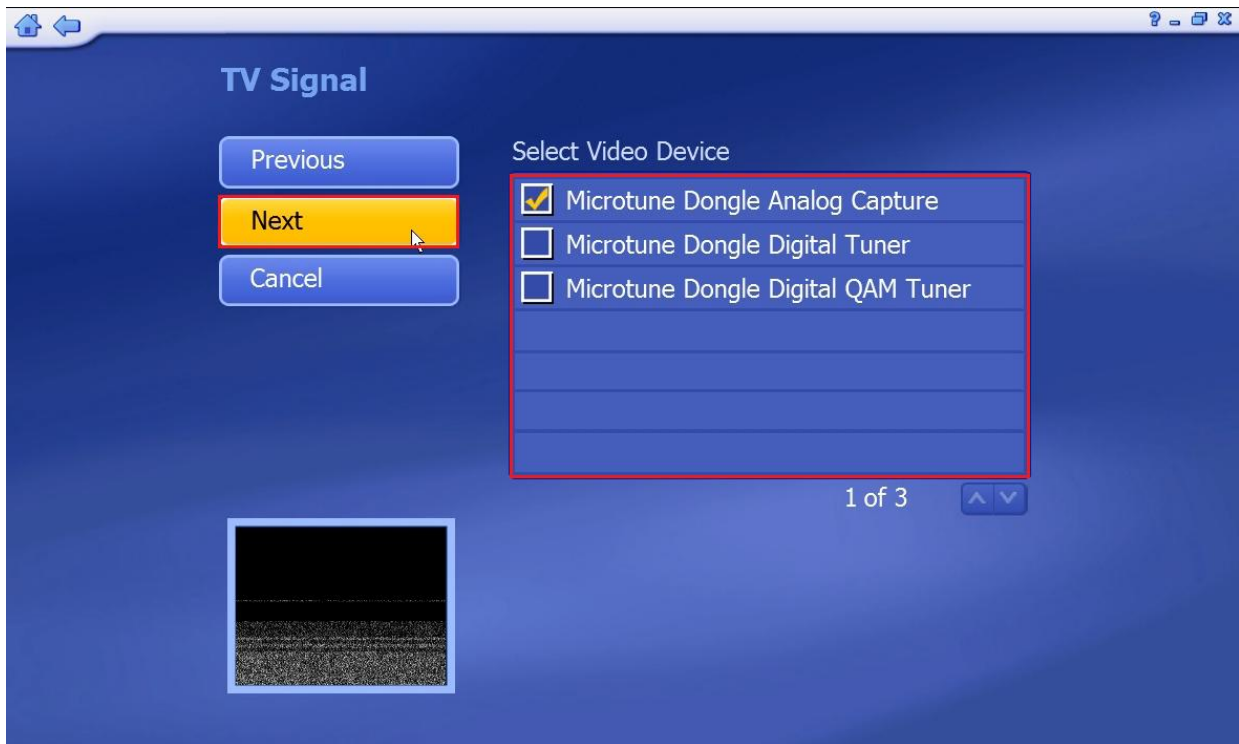
9. Click on **TV**:



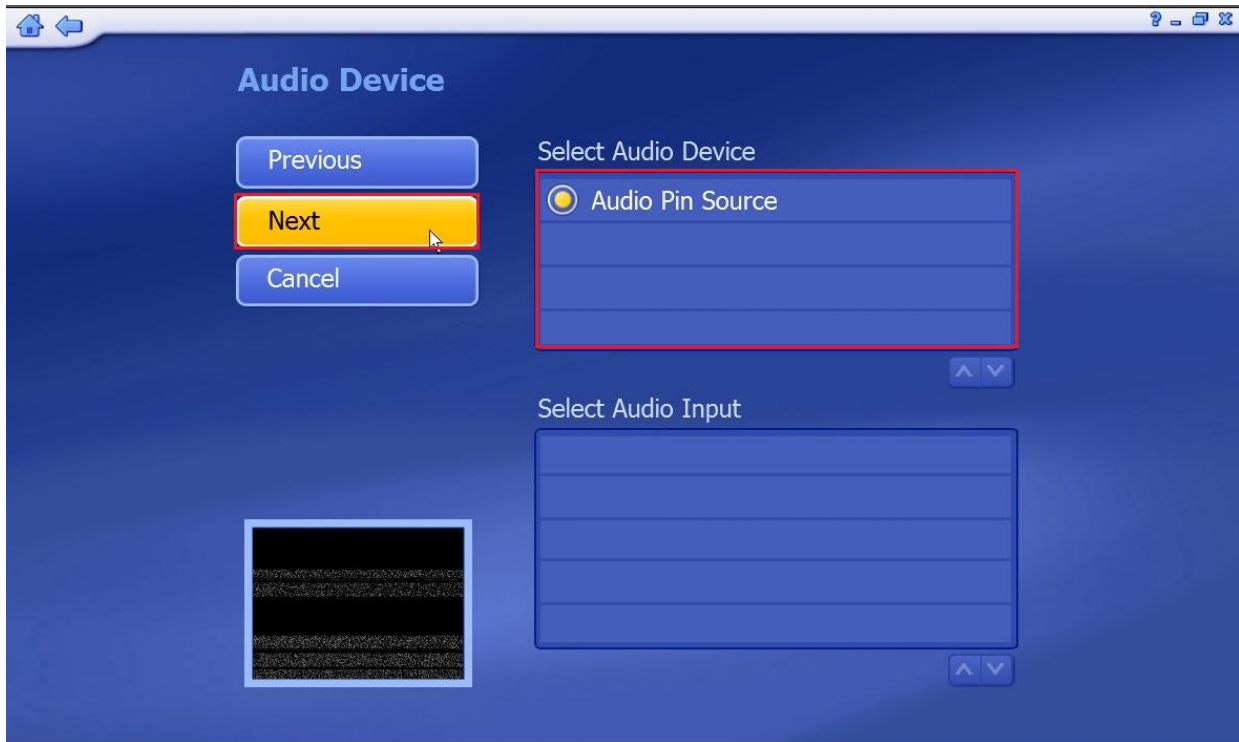
10. Select your region, and click **Next**:



11. Select which Video Device you want to use. Click **Next**:



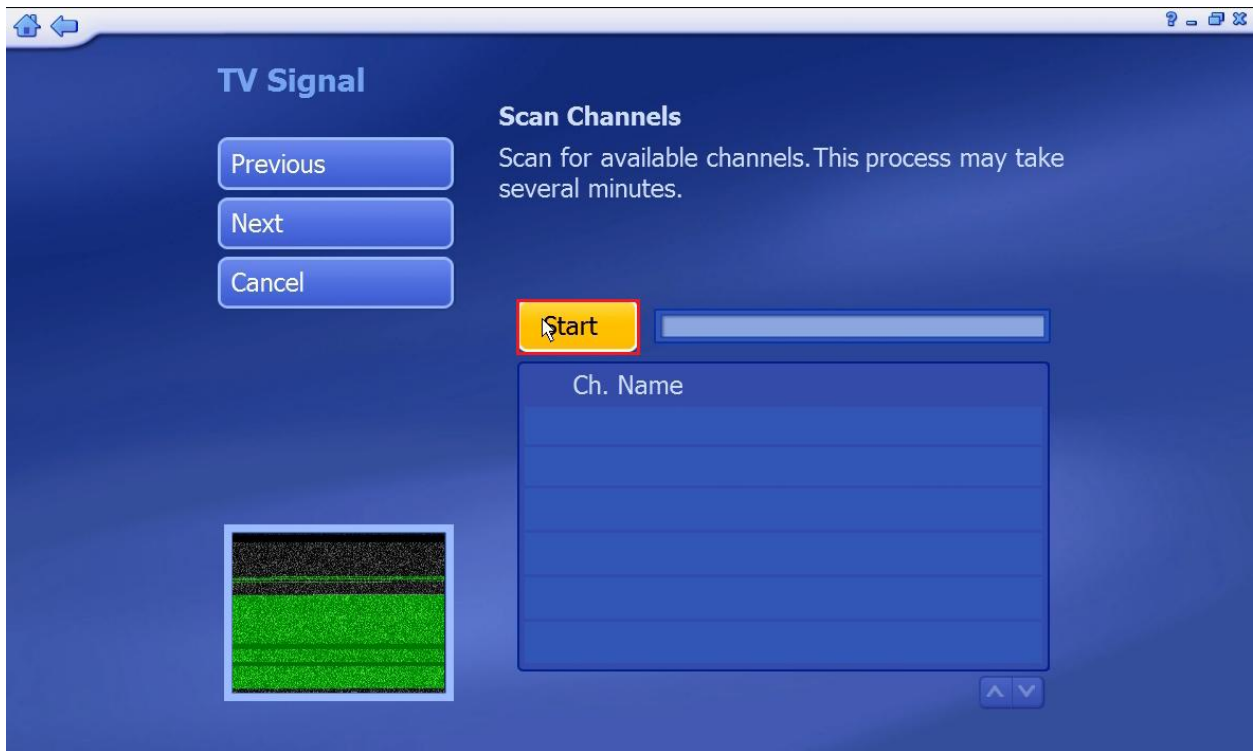
12. Select your Audio Device and click **Next**:



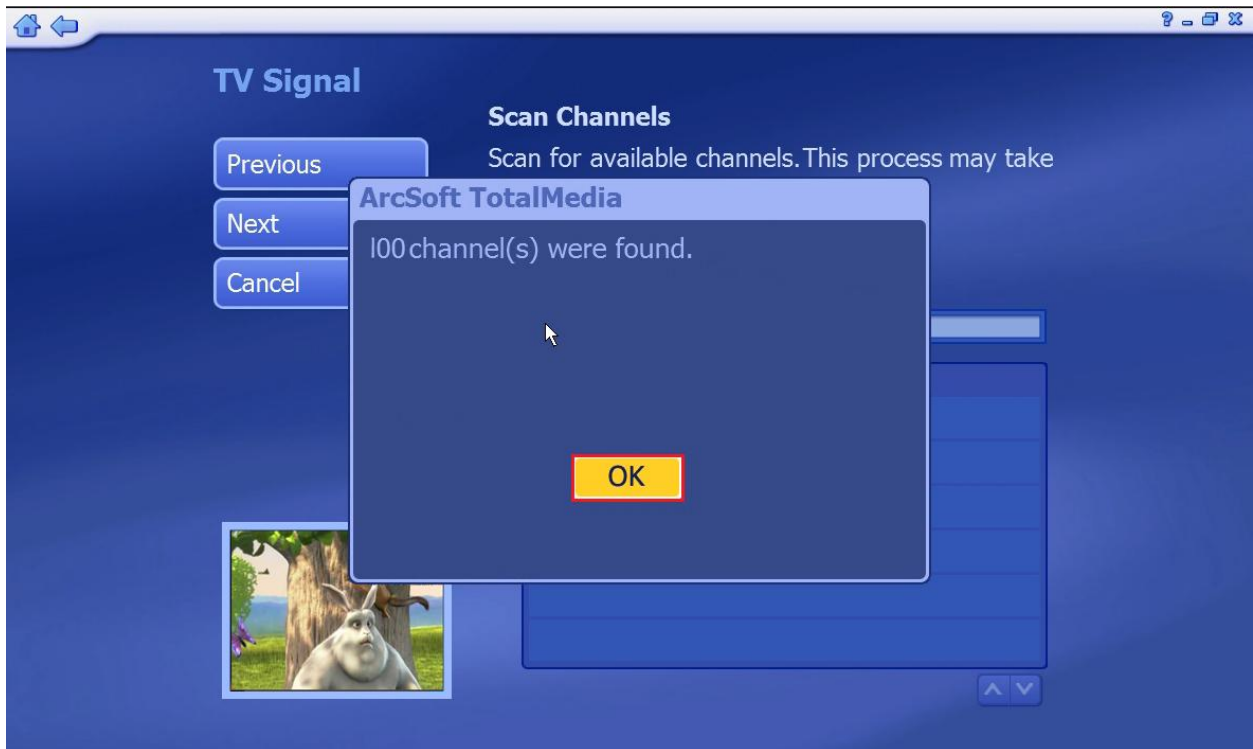
13. Select your TV Signal and click **Next**:



14. Click **Start**:



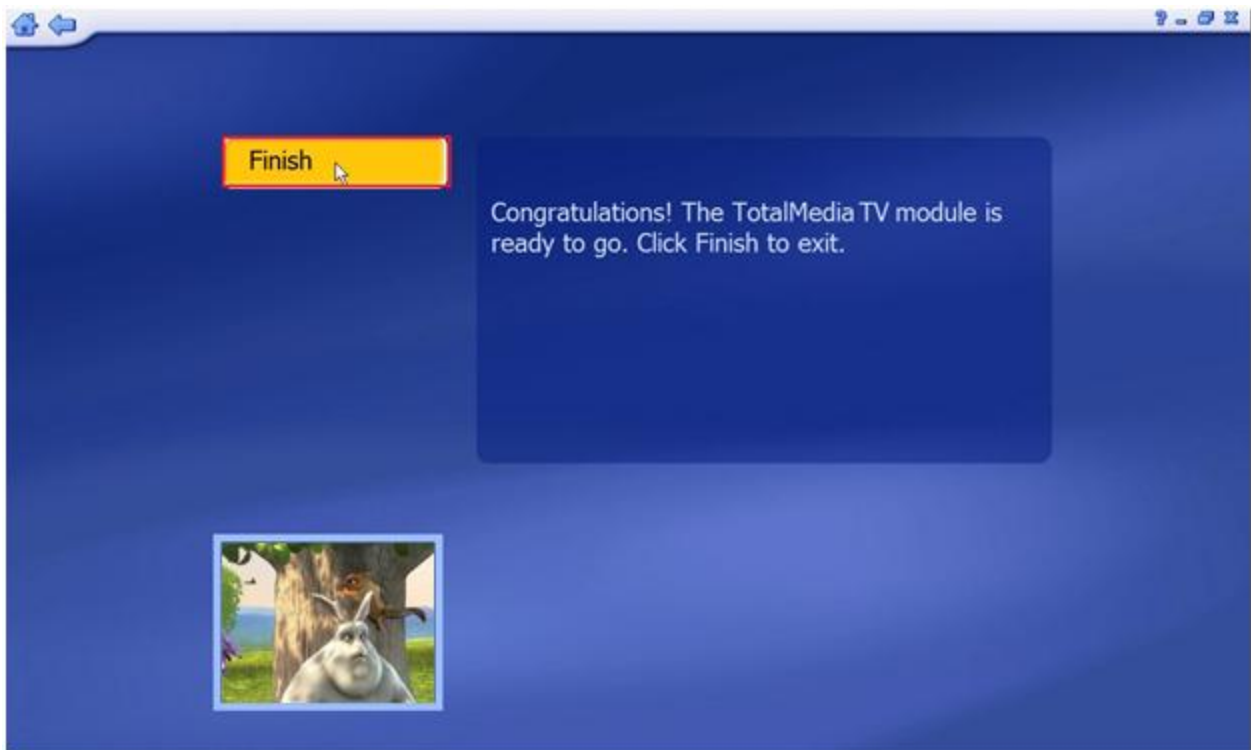
15. After the scan is complete, click **OK**:



16. You can configure a second tuner if you wish, otherwise click **No**, then **Next**.



17. Click **Finish**:



18. You can now watch your TV shows:

